



SANTA FAMILIA



SANTA FAMILIA

## BEST OF BOTH WORLDS

You could say that we were dreaming of a Project like Santa Familia since our Company was started. We fell in love with the beach, the views, the colonial wall. Over the years, we projected everything we found charming about Casco onto the project, adding all the pampering that our small neighborhood never had. It is simply the best of both worlds.

  
SANTA FAMILIA



SANTA FAMILIA



## WHAT IS LIFESTYLE?

Lifestyle is the sum of where you go, what you do and who you do it with. It is how you spend your time. It is the way you express who you are and what you value. Your lifestyle is not you, but it shapes you.

**The question is, are you shaping it?**

Santa Familia grew out of the belief that we all can, and should, shape our lifestyles, and that the place we live matters. Our customers have told us for years that a healthy, intellectually stimulating, community - oriented lifestyle should not require sacrifices. Cultural richness should not come at the expense of every day convenience.



SANTA FAMILIA









## A BEACH LIFESTYLE IN THE CITY

We have long been inspired by Slim Aarons images of a nostalgic, tropical cosmopolitan lifestyle that was somehow both decadent and wholesome. His photos on the beaches of Acapulco and other famous destinations reminded us of stories from casqueños growing up in Playa Santo Domingo and of Tomas Miro and gringo soldiers surfing there in the 40s.

The bay cleanup has started to bring the beach back to life, and seems to be feeding a

societal thirst for healthy living. Casqueños use it for everything from paddle boarding to softball and sunset picnics.

The Casco shoreline is a 70 hectare temporal park that changes from water sports arena to beach and nature walk every six hours. Few places in the world are surrounded by such a spectacular kinetic sculpture.

Casco is a place where health and wellness come easy, and Santa Familia makes it easier.



SANTA FAMILIA



Slim Aarons Premium Archive/Getty Images



## THE BOND BETWEEN COMMUNITY AND CULTURE

Why do culture and walkable districts go hand-in-hand? The great urban philosopher Jane Jacobs described what she called a “ballet of the street” that stimulated chance encounters and a sense of community, causing neighbors to experience things and know people they wouldn’t have otherwise.

For some, neither the anonymity of a tower nor the isolation of a suburban house work. Our neighbors are curious people who seek intellectual stimulation in human scale

neighborhoods. It is ironic that old towns offer this very modern lifestyle. Culture and community can also exist inside a building. Santa Familia has common areas that invite conversations and encounters, but also private places that encourage introspection.

Not all of us aspire to write a book, but Santa Familia was designed on the belief that living in a place where we can imagine a book being written makes us all better at whatever it is we do.



SANTA FAMILIA



## F R I E N D S   A N D   F A M I L Y

**True luxury is a place that both friends and family call home.** It is having the right space for the right moment, and the facilities to make entertaining easy. Santa Familia has bright, oceanfront spaces for sunny days and sunset gatherings, as well as an cozy dining room and terraces for more intimate evenings.



SANTA FAMILIA





## A PLACE FOR GATHERING

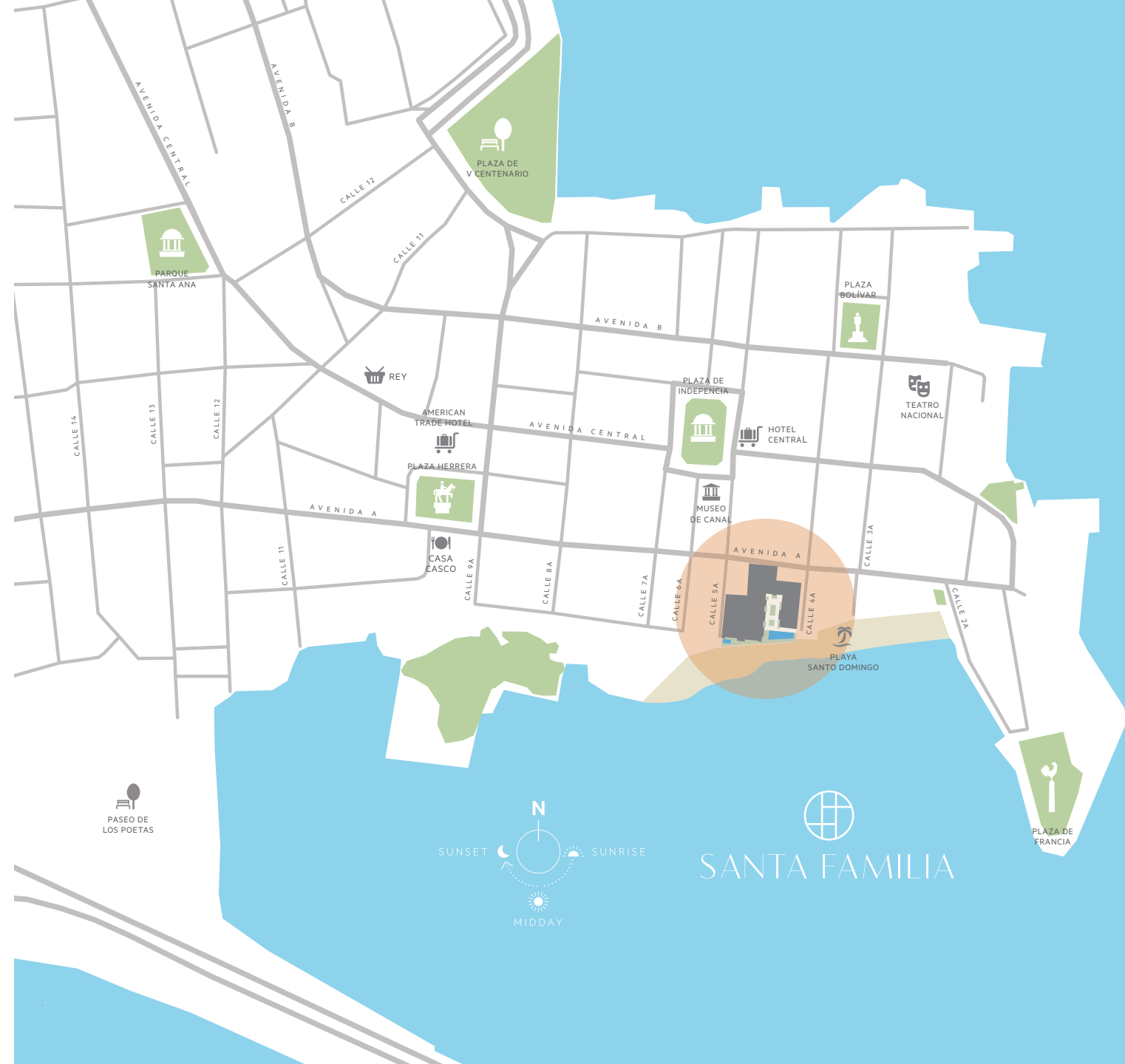
The places we share as a community should always be designed with what we hold dear in mind. These are extensions of our homes meant to be inhabited by memories of loved ones. We took that care when we designed the library at the American Trade Hotel, a public space that feels intimate and breathes history.

We envision the library at Santa Familia as a place to screen wonderful movies and house a well curated collection of thought provoking books.



## UNIQUE LOCATION

Centrically located in Panama City's only true walking district, Santa Familia fronts an almost forgotten Playa Santo Domingo and has views to the Pacific Ocean and the entrance of the Panama Canal.





## THE SITE

The Santa Familia Site, perched on the historic muralla, begged for a connection to the sea.

Santa Familia takes advantage of the exotic contrast between Playa Santo Domingo's expansive ocean views and the cool protected gardens within the site.



SANTA FAMILIA





## A HIDDEN GEM

From street level, Santa Familia will blend into Casco Viejo's parade of charming shops and houses, with terraces peeking above Casco's tumbling rooflines. Parking will be concealed unobtrusively underground with discreet entrances on both Calle 4a and Calle 5a so as not to disturb the historic streetscape.

Seen from the ocean, Santa Familia's neoclassical buildings reveal a landscaped courtyard, swimming pool and an ocean club, exclusive to the residents. Extensive planting and mature palm trees will provide shade as well as a lush tropical feel.



SANTA FAMILIA





SANTA FAMILIA OCEAN  
CLUB & GARDENS

Landscape is critical for us. Santa Familia landscapers, world renown Island Planning Corporation, was inspired by the way plants in Casco sprout out of calicanto walls at abrupt angles.

Extremely tall palm trees in the interior courtyards provide shade while protecting views, with softer, more lush material at ground level.



SANTA FAMILIA









SANTA FAMILIA POOL  
LOUNGE AREA

  
SANTA FAMILIA





SANTA FAMILIA ROOF  
TERRACES LOOKING SOUTH

  
SANTA FAMILIA





## SANTA FAMILIA BALCONIES

The Casco lifestyle is not complete without a big balcony, Santa Familia's are up to two meters deep, and as wide as we could make them while still maintaining the rhythm of the facades. For most of us balconies this scale become a second outdoor living room.







PROVISIONAL INFORMATION - NOT FOR DISTRIBUTION  
Computer generated image of proposed building, subject to change.



PROVISIONAL INFORMATION - NOT FOR DISTRIBUTION  
Computer generated image of proposed building, subject to change.





PROVISIONAL INFORMATION - NOT FOR DISTRIBUTION  
Computer generated image of proposed building, subject to change.





PROVISIONAL INFORMATION - NOT FOR DISTRIBUTION  
Computer generated image of proposed building, subject to change.

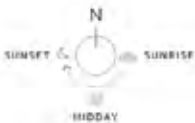


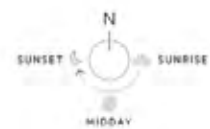
SANTA FAMILIA

PROVISIONAL INFORMATION - NOT FOR DISTRIBUTION



FIRST FLOOR









SANTA FAMILIA

PROVISIONAL INFORMATION - NOT FOR DISTRIBUTION



SANTA FAMILIA

PROVISIONAL INFORMATION - NOT FOR DISTRIBUTION



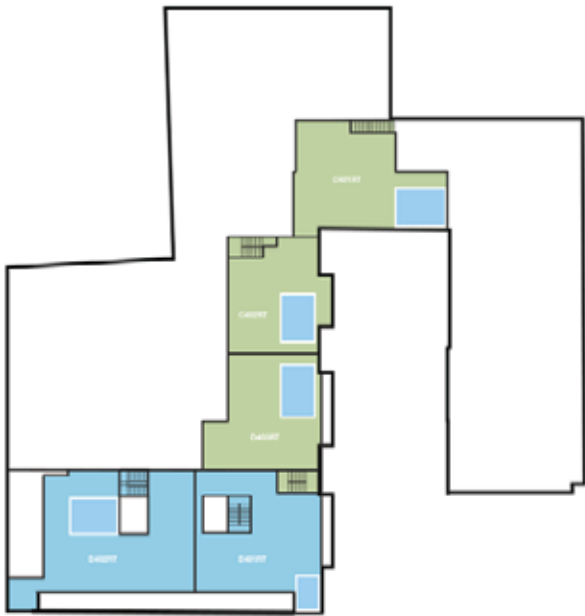


# SANTA FAMILIA



## SANTA FAMILIA

PROVISIONAL INFORMATION - NOT FOR DISTRIBUTION



ROOF LEVEL



## 52 APARTMENTS

### INSPIRED INTERIORS

The open-plan spaces with private balconies, terraces or gardens are thoughtfully laid out for relaxing or entertaining. Timeless tropical interiors with light filled living areas and contemporary kitchens give way to inner sanctums with generous master suites, wardrobes and bathrooms.

#### General:

- Solid hardwood doors throughout
- Double-pane acoustic glass windows and doors for exteriors
- Lutron whole home lighting controls
- Central air conditioning with VRF
- Concrete exterior walls
- Emergency generator powers all apartments and common areas
- Water reserve tank
- Whole building Surge Protection

#### Flooring

We understand the flooring within a space goes along way to defining it and affects furniture and decoration choices. We have therefore left this decision up to you. At Santa Familia we have provided a wide range of flooring options: Engineered wood, natural stone or traditional handmade tiles. Engineered wood floors in bedrooms and traditional handmade ties in living areas. No longer options.

#### Security

- Audio/visual entry system linked to entrance door
- Hard wired smoke detectors, heat detectors and sprinklers provided
- Lockable windows
- 24-hr security concierge service and monitored CCTV

## WELL APPOINTED KITCHENS

Your kitchen in Santa Familia will be individually planned to suit the layout of your home. Smart contemporary detailing and elegant design will make the kitchen the ideal extension of your living space. Quartz worktops, cabinets and a full range of high-end appliances by german manufacturer Miele, make the hub of the home practical as well as beautiful.

#### Specification:

- Individually designed layouts
- Quartz Stone countertops
- Induction cooktops
- Built-in extraction ducted to the exterior of the building
- Built-in dishwasher
- Built-in fridge/freezer
- Italian kitchen cabinets

## ELEGANT BATHROOMS

The chic bathrooms and en-suites have been designed to maintain the timeless tropical style. Elegant feature tile walls, concealed cabinetry and high quality contemporary sanitary ware and fittings by Kohler create luxuriant 'boutique hotel' feel, perfect for relaxing or getting ready for the day ahead.

#### Specification:

- Shower with 'rain' shower-head
- Tempered frameless showers partitions
- 1 piece toilets
- Full height wall tiling to the bath or shower wet areas
- Fitted wall cabinet with mirrored doors
- LED downlights

## OUTSIDE SPACE

Most apartments in Santa Familia have extensive outside space, from balconies and patios to gardens and roof terraces, many with pools. Extensive planted raised beds and screens will provide privacy and soften the spaces, creating verdant pocket oases in which to relax.

#### Balconies/Terraces:

- Balconies have painted steel or formed concrete balustrades with terrazzo floors
- Terraces have glass balustrades or dwarf walls with coralina paving
- Some rooftops are available with pools

## COMMUNAL AREAS

#### Elevators:

- 4 Passenger Elevators serving each core and all levels.

#### Car Parking:

- Parking spaces have been allocated to each apartment for purchase. Please check floorplan information for allocation or speak to your Sales Consultant.

#### Internal Communal Areas:

- Ocean Club with lounge & bar
- Library
- Chefs kitchen in Ocean

#### External Communal Areas

- Extensive landscaped oceanfront garden
- Oceanfront swimming pool & lounge area

## BUILDING MANAGEMENT

Hospitality Management Solutions, an experienced hospitality management firm, will be in charge of the effective operation and maintenance of all communal facilities.





# SANTA FAMILIA

SCAN THE CODE  
TO VISIT OUR  
WEBSITE



## CONSERVATORIO

Sustainable Urban Revitalization



At Conservatorio we are committed to inclusive and sustainable urban revitalization. We believe in the value of socially diverse communities and build one affordable housing unit for each high-end apartment.